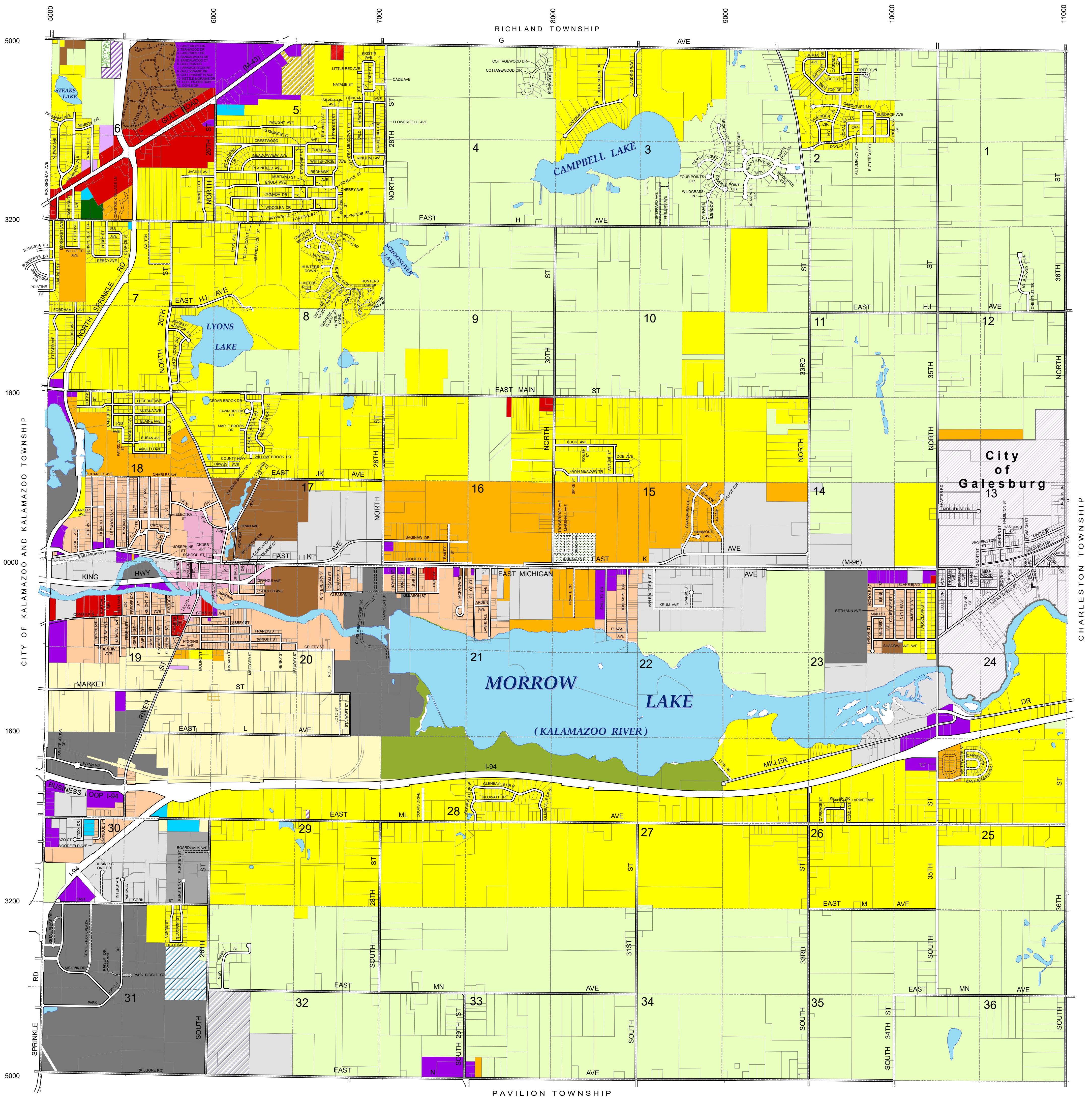


# Charter Township of Comstock

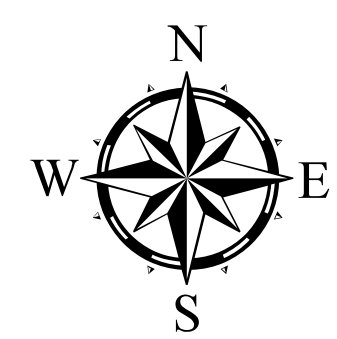
## Kalamazoo County, Michigan

# Zoning Map



### LEGEND

- |  |   |  |  |
|--|---|--|--|
|  | AGR AGRICULTURAL RESIDENTIAL DISTRICT                   |  | CC COMSTOCK CENTER                           |
|  | A-H AGRICULTURAL-HORTICULTURAL DISTRICT                 |  | B-1 NEIGHBORHOOD BUSINESS DISTRICT           |
|  | R-1A SINGLE FAMILY DISTRICT                             |  | B-2 COMMUNITY BUSINESS DISTRICT              |
|  | R-1B SINGLE FAMILY DISTRICT                             |  | B-2C COMMUNITY BUSINESS DISTRICT_CONDITIONAL |
|  | R-1C CLUSTER HOUSING DISTRICT                           |  | B-3 GENERAL BUSINESS DISTRICT                |
|  | RM MULTIPLE FAMILY RESIDENTIAL DISTRICT                 |  | B-3C GENERAL BUSINESS_CONDITIONAL            |
|  | RM-C MULTIPLE FAMILY RESIDENTIAL_CONDITIONAL            |  | LM LIGHT MANUFACTURING DISTRICT              |
|  | RMH MOBILE HOME PARK DISTRICT                           |  | LD RESTRICTED INDUSTRIAL DISTRICT            |
|  | RSM SENIOR CITIZENS MULTIPLE STORY RESIDENTIAL DISTRICT |  | M MANUFACTURING DISTRICT                     |
|  | O-1 OFFICE DISTRICT                                     |  | LM-C LIGHT MANUFACTURING_CONDITIONAL         |
|  | OW OPEN WETLANDS DISTRICT                               |  | M_C MANUFACTURING_CONDITIONAL                |
|  | OW-C OPEN WETLANDS CONDITIONAL                          |  | ALO - AGRICULTURAL LABOR HOUSING OVERLAY     |



1,500 750 0 1,500 Ft

Scale: 1" = 1,500'

Last Revision per Ordinance No. 549  
Adopted: June 16, 2025

